



BUSINESS INDICATORS

**AUSTRALIAN
CAPITAL
TERRITORY**

EMBARGO: 11.30AM (CANBERRA TIME) MON 22 JUNE 1998

C O N T E N T S

	<i>page</i>
Notes	2
Summary of findings	3
Selected business indicators	6
FEATURE ARTICLE	
Profile of small business in the ACT.	7
TABLES	
1 Business expectations: Sales, March quarter 1998/December quarter 1998, expected aggregate change.	10
2 Business indicators, June 1998	11
3 ACT in relation to the rest of Australia	14
4 ACT in relation to the rest of Australia—percentage changes	15

- For further information about these and related statistics, contact Conrad Bulenda on Canberra 02 6207 0286 or any ABS office shown on the back cover of this publication.

NOTES

FORTHCOMING ISSUES

<i>ISSUE</i>	<i>RELEASE DATE</i>
July	20 July 1998
August	17 August 1998

SYMBOLS AND OTHER USAGES

ACT	Australian Capital Territory
n.a.	not available
n.p.	not available for publication
p	preliminary
*	Represents data with a standard error of greater than 25%. Caution should be exercised when using this data.
—	nil or rounded to zero

Dalma Jacobs
Regional Director

SUMMARY OF FINDINGS

UPDATED SERIES

Series updated since the May 1998 issue are: population; annual gross state product; labour force; industrial disputes; wage and salary earners; average weekly earnings; housing and construction; engineering construction; housing finance; retail turnover; motor vehicle registrations; tourist accommodation; selected retail prices; and consumer price index. The feature article on pages 7–9 is on the profile of ACT small businesses.

NOTABLE MOVEMENTS

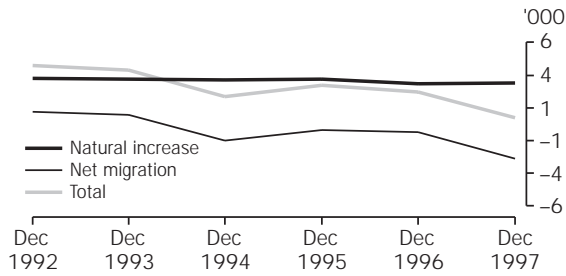
- Population The estimated resident population of the ACT at 31 December 1997 was 308,990, a decrease of 238 since the September quarter 1997 and an increase of 476 since the December quarter 1996. The growth rate to the year to December 1997 was 0.2%. Although the ACT's population showed an increase in the 12 months to December 1997, there were minor decreases in June, September and December quarters as a result of negative net-migration. Early net interstate migration estimates for March quarter 1998 (–987 persons) indicate the first March quarter decrease since 1994 (–284 persons). Nationally, the estimated resident population increased by 1.1% over the year to December 1997.
- 1996–97 ACT gross state product The gross state product (GSP) at constant prices for the ACT in the year 1996–97 was \$8,813 million which was an increase of 0.6% over the previous year. ACT's GSP had declined in each year since the peak of 7.9% in 1993–94. Australia's gross national product (GNP) increased 3.0% in 1996–97.
- Labour force The May 1998 trend unemployment rate for the ACT fell by 0.1 percentage points from April to a level of 6.9% after peaking at 8.2% in October 1997. Trend employment increased (up 0.2% or 400 persons) in May 1998 and the participation rate rose 0.2 percentage points to 72.0%. Nationally, trend employment increased by 0.1% and the trend unemployment rate remained the same at 8.0%.
- Industrial disputes For the 12 months ended February 1998 there were 17 working days lost per thousand employees in the ACT compared to a figure of 76 days nationally. This represented an increase of 13.3% from the previous period for the ACT and an increase of 4.1% for Australia. There was a decrease of 86.8% and 40.6% on the number of working days lost per thousand employees from the previous year for the ACT and Australia respectively.
- Wage and Salary Earners The trend number of wage and salary earners reported by Government agencies and businesses located in the ACT fell 1.8% (or 2,500 persons) to 137,200 over the three months to November 1997. This compares to a national decline of 0.1% (or 5,100 persons). The proportion of private sector wage and salary earners in the ACT now stands at 49%. These figures exclude self employed persons in jobs located in the private sector.

Average weekly earnings	The trend average weekly earnings for the February 1998 quarter in the ACT was \$711.30, an increase of 2.5% from the November quarter 1997 and 6.4% from the February quarter 1997. Nationally, the trend average weekly earnings increased by 0.9% from the November quarter 1997 and 3.5% from the February quarter 1997.
Housing and construction	<p>The trend number of dwelling units approved in the ACT decreased by 9.2% to 89 dwelling units in April 1998, the fifth consecutive monthly decrease. Nationally the total number of dwelling units approved increased by 1.7% in April 1998.</p> <p>The value of non-residential building approvals in the ACT was \$6.5 million in April 1998, a decrease of \$1.1 million (down 14.5%) from the previous month and \$6.6 million (50.4%) lower than April 1997. Nationally, the value of non-residential building approvals increased by 30.1% from the previous month and was 51.8% higher than April 1997.</p>
Engineering construction	<p>The value of engineering construction work done by the public sector in the ACT during the December quarter 1997 increased by 15.9% or \$2.5 million from the previous quarter but was down \$2.7 million or 12.9% on the December quarter 1996. Nationally, the value of public sector work done increased 12% from the previous quarter and was down 5.6% on the December quarter 1996.</p> <p>The value of engineering construction work done by the private sector in the ACT during the December quarter 1997 increased by 136.3% to \$18.9 million from the previous quarter and was up 71.8% or \$7.9 million on the December quarter 1996. Nationally, the value of private sector engineering construction work done was up 16.3% from the previous quarter and was up 20.9% on the December quarter 1996.</p>
Housing finance	The trend number of dwelling units financed (including refinancing) in the ACT during April 1998 decreased to 627 dwellings, a drop of 5.1%. The trend estimate for the value of commitments in the ACT was \$71 million, a decrease of 5.3% on the previous month. Refinancing of existing dwellings comprised 19.1% of the total number of dwelling units financed in April 1998 which is similar to the previous months percentage (18.8%). Nationally, the trend number of dwelling units financed (including refinancing) during April 1998 was 40,301 which was an increase of 0.5% on the previous month while the trend estimate for the value of commitments remained the same.
Retail turnover	The trend estimate for retail turnover in the ACT for April 1998 was \$216.1 million, down 0.1% on the previous month's figure and up 6.5% on twelve months ago. The national trend retail turnover recorded an increase of 0.2% on the previous month and was up 4.3% on a year ago.
Motor vehicle registrations	The trend estimate for ACT new motor vehicle registrations in April 1998 was 1,447, down 0.6% on the previous month, but up 37.3% on April 1997. Nationally, the trend for total new registrations in April 1998 recorded a 0.5% increase, and showed continuous growth for the past thirteen months.

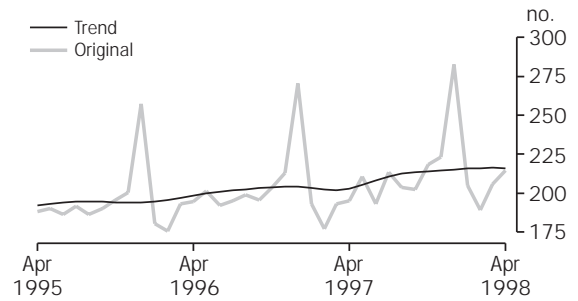
Tourist accommodation	<p>The room occupancy rate for ACT hotels, motels and guest houses in the December quarter 1997 was 63.3%, up 7.0 percentage points on the previous quarter and 0.2 percentage points on twelve months ago.</p> <p>Trend takings from accommodation at average 1989–90 prices were \$16.6 million for the December quarter 1997 in the ACT, up 3.1% from the previous quarter as well as from the corresponding quarter of the previous year.</p>
Consumer price index	<p>The ACT experienced a 0.7% increase in the All Groups CPI for the March quarter 1998. This compared to a national rise of 0.3%. The ACT annual CPI rate to March quarter 1998 recorded a negative figure of 0.7%, the equal largest decrease with Adelaide. The annual CPI for the weighted average of the eight capital cities was minus 0.2%.</p>

SELECTED BUSINESS INDICATORS

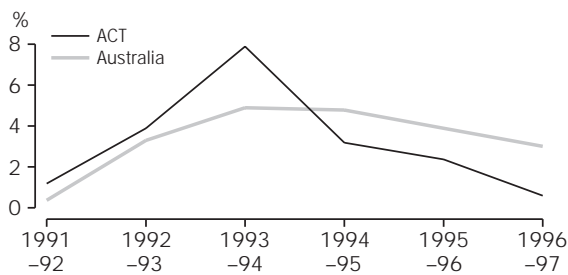
COMPONENTS OF POPULATION GROWTH:
Years ending December



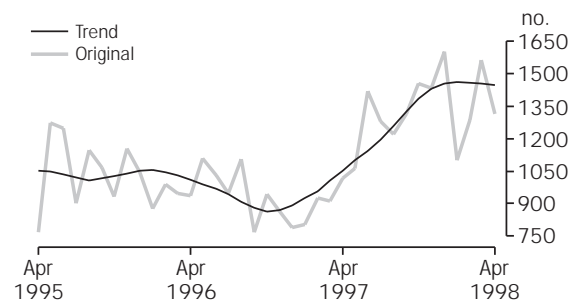
RETAIL TURNOVER



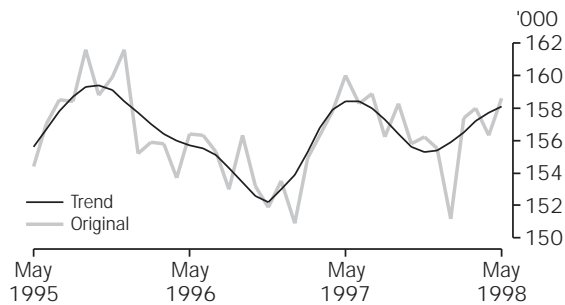
PERCENTAGE CHANGE IN GROSS STATE PRODUCT:
(at average 1989-90 prices)



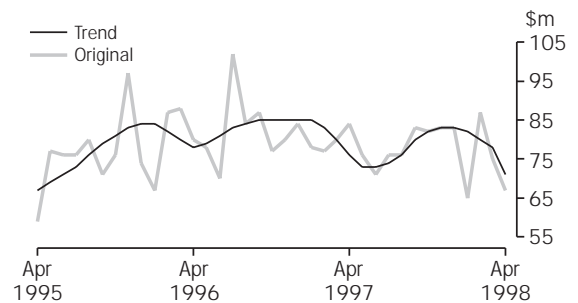
NEW MOTOR VEHICLE REGISTRATIONS



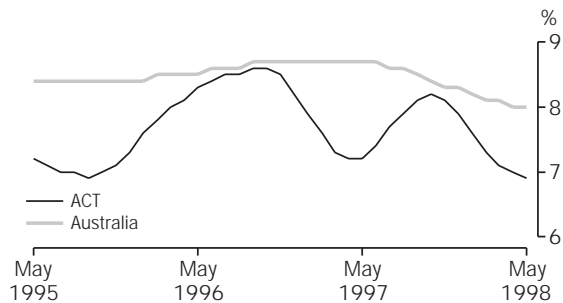
LABOUR FORCE—EMPLOYMENT



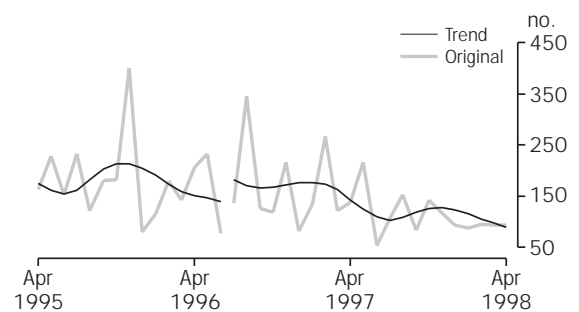
HOUSING FINANCE



LABOUR FORCE—TREND UNEMPLOYMENT RATE



BUILDING APPROVAL—DWELLING UNITS APPROVED



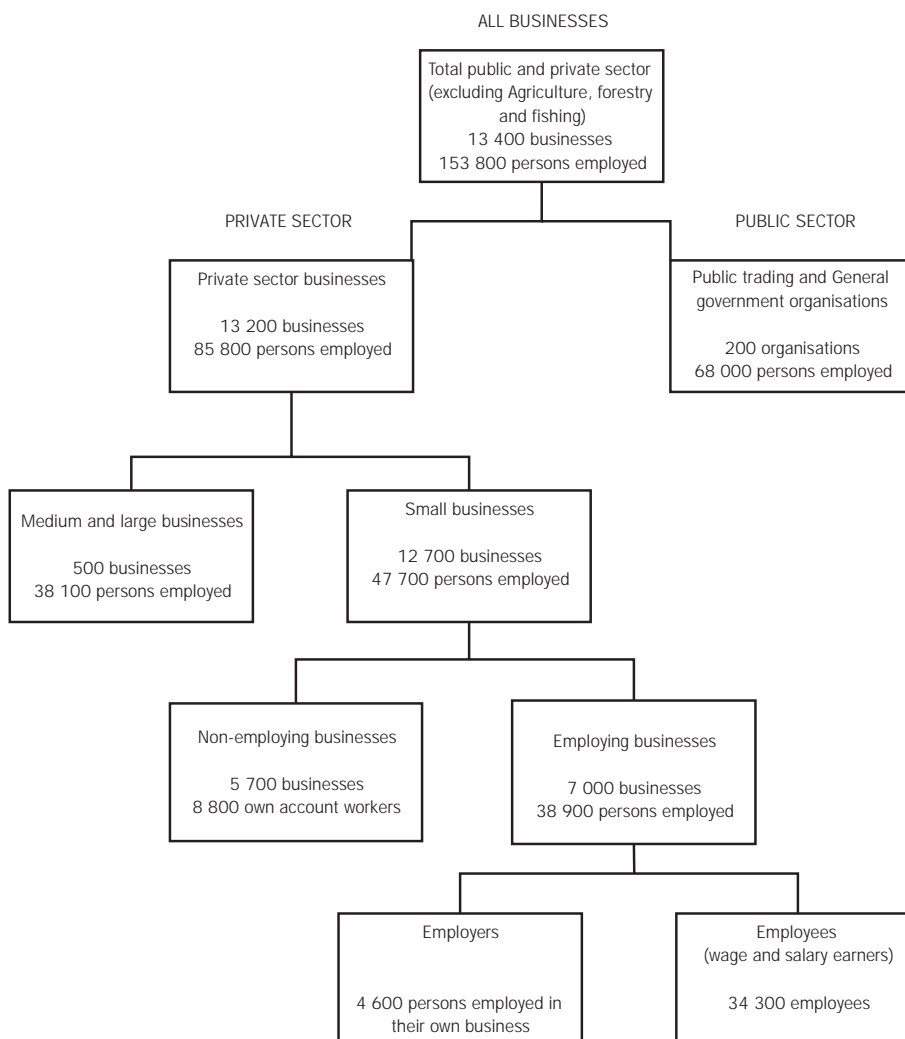
Note: For the period July to December 1996, 165 dwelling units and total building work of \$40.5 million (16%) had been incorrectly omitted from data reported to ABS. All series for the ACT have been revised from July 1996 and a trend break has been included in the graph.

PROFILE OF SMALL BUSINESS IN THE AUSTRALIAN CAPITAL TERRITORY

In 1996–97 three out of every ten persons working in the ACT worked in a small private sector business. About one in four persons working in the small business sector worked for themselves as own account workers or were employed by their own businesses. Small businesses are characterised by being independently owned and operated, closely controlled by the owners or managers who contribute most of the operating capital and having the principal decision-making functions rest with the owners.

The diagram below shows the structure of all businesses in the ACT for the year 1996–97 and how small businesses fit into the total business picture. Agriculture, forestry and fishing businesses are excluded from these details.

STRUCTURE OF ACT BUSINESS, 1996–97



Source: *Labour Force, Australia* (Cat. no. 6203.0); *Employed Wage and Salary Earners, Australia* (Cat. no. 6248.0); *Agricultural Industries, Financial Statistics, Australia* (Cat. no. 7507.0).

The details contained in this article are derived from a number of sources and define non-agricultural private sector small businesses as those with less than 20 employees in the non-manufacturing industries, and those with less than 100 employees in the manufacturing industries. In 1996–97, private sector businesses employed 56% of all persons employed in the public and private sectors in the ACT. Of those persons employed by private sector businesses, 56% were employed by small businesses. People working for themselves in small business enterprises were 28% of all persons working in small businesses.

Over the 13 years to 1996–97, the number of small businesses in the ACT increased by 46% (to 12,700) and the number of people employed by small business increased by 47% (to 47,700). In 1996–97, the number of small business as a proportion of all businesses was 96% and the number of people employed in small businesses as a proportion of those employed in all businesses was 56%. The number of small businesses in the ACT reached a peak in 1994–95 (13,300) and declined by 600 over the following two years. Small business employment peaked in 1995–96 and fell by 1,000 in 1996–97.

SMALL BUSINESS NUMBERS AND PERSONS EMPLOYED

Year	Business				Employment			
	Small Business		All business	Persons working in own business	Private sector employees	Small business		All business
	Number	Proportion of all businesses	Number			Total employment	Proportion of all businesses	Total employment
'000	%	'000	'000	'000	'000	%	'000	
1983–84	8.7	96.7	9.0	8.7	23.7	32.4	60.3	53.7
1993–94	12.4	94.7	13.1	12.6	30.9	43.5	53.2	81.7
1994–95	13.3	95.7	13.9	14.1	33.8	47.9	59.0	81.2
1995–96	13.1	96.3	13.6	13.4	35.3	48.7	59.9	81.3
1996–97	12.7	96.2	13.2	13.4	34.3	47.7	55.6	85.8

Most of the growth in the number of small businesses in the ACT has occurred in the businesses employing less than 10 persons (average annual growth rate of 2.8%) and in non-employing businesses where the person is an own account worker (average annual growth rate of 3.8%). For larger sized businesses there has been very little change in the number of businesses.

NUMBER OF BUSINESSES BY EMPLOYER SIZE

	Units	Non-employing businesses	Employer size group					Total small businesses	All business
			1–9	10–19	20–49	50–99	100 or more		
1983–84	'000	3.5	4.4	0.8	0.2	0.1	0.0	8.7	9.0
1993–94	'000	6.1	5.6	0.7	0.5	0.1	0.1	12.4	13.1
1994–95	'000	6.6	6.1	0.6	0.4	0.1	0.1	13.3	13.9
1995–96	'000	6.1	6.3	0.7	0.3	0.1	0.1	13.1	13.6
1996–97	'000	5.7	6.3	0.7	0.3	0.1	0.1	12.7	13.2
Average annual rate of change 1983–84 to 1996–97	%	3.8	2.8	(1.0)	3.2	0.0	0.0	3.0	3.0

Small business From 1983–84 to 1996–97 the number of total private sector employees increased by 27,400 and small business employees made up 10,600 of this increase. The highest average annual employment growth rate in small business was 4% for own account workers. Small businesses employing 10 to 19 persons had almost half the average annual growth rate at 2.1%. The highest average annual growth rate in employment was achieved outside of the small business sector. Private sector business enterprises employing 100 or more people had an average annual employment growth rate of 5.6%.

PERSONS EMPLOYED BY EMPLOYER SIZE

	Private sector employees											
	Persons working in own small business(a)			Employer size group							Small business employees	All employees
	Unit	Own account workers	Employers	1–9	10–19	20–49	50–99	100 or more				
1983–84	'000	5.3	3.4	15.6	8.1	6.6	4.1	10.6	23.7	45.0		
1993–94	'000	8.6	4.0	20.5	*10.4	15.6	4.1	18.5	30.9	69.1		
1994–95	'000	9.8	4.3	21.5	10.3	12.7	5.5	17.1	33.8	67.1		
1995–96	'000	9.3	4.1	22.7	11.2	10.0	6.4	17.6	35.3	67.9		
1996–97	'000	8.8	4.6	22.4	10.6	10.5	7.3	21.6	34.3	72.4		
Average annual rate of change 1983–84 to 1996–97	%	4.0	2.4	2.8	2.1	3.6	4.5	5.6	2.9	3.7		

(a) Includes working proprietors and partners of unincorporated employing and non-employing businesses; working directors of incorporated businesses are classified as employees.

A greater proportion of private sector businesses were mainly engaged in service producing industries in the ACT (80%) as compared to Australia (74%). The employment proportions in the service producing industries were 87% for the ACT and 74% for Australia. The proportions for the small businesses showed a similar situation.

SMALL BUSINESSES AND PERSONS EMPLOYED BY INDUSTRY—1996–97

Industry division	Small business									
	Employing			Non-employing			Total		Total all business	
	Businesses	Employers	Employees	Businesses	Own account workers(a)	Businesses	Employment	Businesses	Employment	
	'000	'000	'000	'000	'000	'000	'000	'000	'000	
AUSTRALIAN CAPITAL TERRITORY										
Goods producing industries	1.1	1.0	5.9	1.6	2.8	2.7	9.7	2.7	11.0	
Service producing industries	5.9	3.6	28.4	4.1	6.0	10.0	38.0	10.5	74.8	
Total	7.0	4.6	34.3	5.7	8.8	12.7	47.7	13.2	85.8	
AUSTRALIA										
Goods producing industries	111.8	65.4	686.8	127.4	217.8	239.2	970.0	242.3	1 656.2	
Service producing industries	378.8	226.2	1 628.1	281.7	423.0	660.5	2 277.3	687.2	4 814.4	
Total	490.6	291.6	2 314.9	409.1	640.8	899.7	3 247.3	929.5	6 470.6	

(a) Includes working proprietors and partners of unincorporated employing and non-employing businesses; working directors of incorporated businesses are classified as employees.

1BUSINESS EXPECTATIONS: SALES, MARCH QUARTER 1998/
DECEMBER QUARTER 1998, EXPECTED AGGREGATE CHANGE

<i>Period</i>	<i>ACT</i>	<i>Aust.</i>
	%	%
Short-term		
Sep qtr 1996–Dec qtr 1996	-0.3	1.6
Dec qtr 1996–Mar qtr 1997	-1.1	0.4
Mar qtr 1997–Jun qtr 1997	1.3	1.6
Jun qtr 1997–Sep qtr 1997	-1.7	0.7
Sep qtr 1997–Dec qtr 1997	0.5	3.0
Dec qtr 1997–Mar qtr 1998	-1.2	-0.3
Medium-term		
Sep qtr 1996–Sep qtr 1997	1.5	3.1
Dec qtr 1996–Dec qtr 1997	2.2	3.1
Mar qtr 1997–Mar qtr 1998	1.7	2.9
Jun qtr 1997–Jun qtr 1998	2.0	2.4
Sep qtr 1997–Sep qtr 1998	1.2	3.9
Dec qtr 1997–Dec qtr 1998	2.7	2.9

Indicator	Unit	ACT			Aust.		
		Latest figure	Previous period	% change from	Latest figure	Previous period	% change from
				Same period previous year			Same period previous year
POPULATION, VITAL AND LABOUR							
POPULATION, Dec qtr 97	'000	309.0	-0.1	0.2	18 631.1	0.2	1.1
Natural increase	no.	951	87.9	21.8	31 861	22.3	2.5
Net migration	no.	-1 189	—	—	10 618	—	—
<i>Total increase</i>	no.	-238	—	—	42 479	—	—
LABOUR FORCE, May 98							
Original Series							
Employed	'000	158.6	1.5	-0.9	8 576.6	—	2.2
Unemployed	'000	11.3	-1.7	-3.4	738.5	0.2	-6.7
Unemployment rate	%	6.7	-0.1	-0.1	7.9	—	-0.7
Participation rate	%	72.1	1.0	-1.0	63.1	-0.1	—
Long-term unemployed, Apr 98	no.	2 758	-25.6	-9.3	235 978	-4.3	-1.6
Long-term unemployed as percentage of total unemployed	—	24.1	-3.1	-1.4	32.0	1.2	2.0
Trend series							
Employed	'000	158.1	0.2	-0.2	8 559.4	0.1	2.0
Unemployed	'000	11.7	-0.8	-4.9	746.5	-0.3	-6.7
Unemployment rate	%	6.9	-0.1	-0.3	8.0	—	-0.7
Participation rate	%	72.0	0.2	-0.7	63.1	—	-0.1
WAGE AND SALARY EARNERS, Nov 97							
Trend series							
Public Sector	'000	70.3	1.6	0.6	1 477.0	—	-0.9
Private Sector	'000	66.9	-5.1	0.6	5 363.4	-0.1	1.1
Total	'000	137.2	-1.8	0.6	6 840.4	-0.1	0.7
JOB VACANCIES, Feb 98	'000	1.0	—	—	75.5	10.9	20.6
INDUSTRIAL DISPUTES IN PROGRESS, Feb 98							
Working days lost	'000	0.3	—	—	39.4	358.1	120.1
Days lost per '000 employees (year ended Dec 97)	no.	17.0	13.3	-86.8	76.0	4.1	-40.6
BUILDING AND CONSTRUCTION							
HOUSING FINANCE, Apr 98							
Secured commitments to individuals for							
Original Series							
Construction of dwellings	\$m	4.4	-30.2	-45.0	702.0	-5.3	6.5
Purchase of new dwellings	\$m	2.3	-39.5	-70.1	236.0	-6.7	-8.9
Purchase of established dwellings	\$m	48.5	-6.9	-4.9	2 925.5	-1.9	3.1
Re-financing	\$m	11.2	-13.2	-37.1	731.0	-6.8	-26.3
<i>Total housing commitments</i>	\$m	67.0	-10.7	-20.2	4 595.0	-3.4	-3.2
Seasonally adjusted series							
<i>Total housing commitments</i>	\$m	64.0	-4.5	-17.9	4 742.0	9.9	2.9
Trend series							
Dwelling units financed	no.	627	-5.1	-12.8	40 301	0.5	-0.9
<i>Total housing commitments</i>	\$m	71.0	-5.3	-6.6	4 546.0	—	4.7
BUILDING APPROVALS, Apr 98							
Original series							
Dwelling units	no.	93	-1.1	-32.6	13 919	0.5	12.4
Value of new residential	\$m	11.2	-10.4	-32.5	1 552.8	7.0	25.0
Value of residential alterations and additions	\$m	5.7	23.9	-1.7	280.5	9.4	32.1
Value of non-residential	\$m	6.5	-14.5	-50.4	1 249.0	30.1	51.8
<i>Value of total building</i>	\$m	23.8	-3.6	-32.8	3 082.4	15.5	35.3
Trend series							
Dwelling units	no.	89	-9.2	-37.8	14 047	1.7	17.7

Indicator	Unit	ACT			Aust.		
		Latest figure	% change from		Latest figure	% change from	
			Previous period	Same period previous year		Previous period	Same period previous year
BUILDING AND CONSTRUCTION <i>continued</i>							
BUILDING COMMENCEMENTS, Dec qtr 97							
New houses	no.	297	28.0	6.1	26 504	11.2	23.9
Value of houses commenced	\$m	37.6	52.2	18.2	2 996.0	10.9	27.6
Value of non-residential building commenced	\$m	65.6	16.1	-41.0	3 410.8	-7.2	8.0
<i>Value of total commencements</i>	<i>\$m</i>	<i>126.6</i>	<i>28.7</i>	<i>-25.6</i>	<i>8 387.3</i>	<i>2.3</i>	<i>18.8</i>
PRICE INDEXES							
Established house price index, Dec qtr 97	—	127.1	0.7	2.3	124.2	2.5	7.7
ENGINEERING CONSTRUCTION (Dec Qtr 97)							
Private sector							
Value of work commenced	\$m	15.1	84.1	13.5	2 751.0	-2.4	30.5
Value of work done	\$m	18.9	136.3	71.8	2 724.9	16.3	20.9
Value of work yet to be done	\$m	6.9	-69.2	-78.8	6 521.1	3.6	24.4
Value of work done by public sector	\$m	18.2	15.9	-12.9	1 424.7	12.0	-5.6
PRICES, WAGES AND CONSUMER SPENDING							
CONSUMER PRICE INDEX, Mar qtr 98							
Food	(a)	125.3	0.3	2.7	122.1	0.8	1.6
Housing	(a)	93.3	-0.4	-9.8	93.4	-0.8	-6.8
Transportation	(a)	129.0	—	-2.2	122.9	-0.9	-1.8
All groups	(a)	120.6	0.7	-0.7	120.3	0.3	-0.2
AVERAGE WEEKLY EARNINGS, Feb 98							
Original series							
Males	\$	822.8	4.3	5.9	715.6	0.9	3.9
Females	\$	611.1	3.6	6.0	470.1	0.9	2.7
<i>persons</i>	\$	<i>719.0</i>	<i>3.9</i>	<i>5.8</i>	<i>597.4</i>	<i>0.8</i>	<i>2.7</i>
Trend series							
Males	\$	811.7	2.2	5.3	714.3	1.2	4.4
Females	\$	605.9	2.4	7.0	469.0	0.7	3.4
<i>Persons</i>	\$	<i>711.3</i>	<i>2.5</i>	<i>6.4</i>	<i>595.9</i>	<i>0.9</i>	<i>3.5</i>
RETAIL TURNOVER, Apr 98							
Original series							
Food retailing	\$m	79.6	-2.3	8.9	4 543.4	-0.2	7.7
Department stores	\$m	24.8	25.3	20.4	981.0	19.2	15.5
Hospitality and services	\$m	39.2	18.1	25.2	1 861.2	1.1	5.0
All other retailing	\$m	70.8	-0.8	1.3	3 585.3	0.8	2.6
<i>Total</i>	<i>\$m</i>	<i>214.4</i>	<i>4.1</i>	<i>10.0</i>	<i>10 970.9</i>	<i>1.8</i>	<i>6.1</i>
Trend Series							
Food retailing	'000	80.9	—	6.4	4 633.5	0.2	5.7
Department stores	\$m	24.0	-0.8	4.3	1 008.0	0.4	5.2
Hospitality and services	\$m	35.7	2.3	15.2	1 871.3	0.5	2.5
All other retailing	%	75.5	-1.0	3.4	3 821.3	0.1	3.2
<i>Total</i>	<i>'000</i>	<i>216.1</i>	<i>-0.1</i>	<i>6.5</i>	<i>11 334.1</i>	<i>0.2</i>	<i>4.3</i>

(A) Base year: 1989-90=100.0).

Indicator	Unit	ACT			Aust.		
		Latest figure	Previous period	Same period previous year	% change from		
					Latest figure	Previous period	Same period previous year
TOURISM AND TRANSPORT							
HOTELS, MOTELS AND GUEST HOUSE ACCOMMODATION, Dec qtr 97							
Original series							
Room nights	'000	225.4	12.3	2.0	9 640.8	1.3	0.9
Takings at current prices	\$m	21.5	13.2	3.9	979.2	3.1	3.5
Takings at 1989-90 prices	\$m	17.9	12.6	4.7	814.1	2.8	3.6
Room occupancy rate (Dec qtr 97)	%	63.3	7.0	0.2	58.2	0.2	-1.7
Seasonally adjusted series							
Room nights	'000	213.6	6.0	0.5	9 374.4	0.9	0.6
Takings at current prices	\$m	20.5	6.8	2.0	940.7	0.8	3.2
Takings at 1989-90 prices	\$m	17.1	6.9	3.0	782.2	0.5	3.3
Trend series							
Room nights	'000	207.5	2.1	-0.4	9 332.0	0.8	1.2
Takings at current prices	\$m	19.8	2.6	1.0	938.5	1.0	3.6
Takings at 1989-90 prices	\$m	16.6	3.1	3.1	781.2	1.0	4.0
NEW MOTOR VEHICLE REGISTRATIONS, Apr 98							
Motor vehicles	no.	1 316	-15.9	29.5	60 690	-11.1	6.2
Seasonally adjusted motor vehicles	no.	1 422	-7.8	31.5	67 169	6.7	17.0
Trend motor vehicles	no.	1 447	-0.6	37.3	64 886	0.5	12.9
AGGREGATE INDICATORS							
STATE ACCOUNTS, 1996-97(a)							
Original series (at average 1989-90 prices)							
Private final consumption expenditure	\$m	4 981	3.6	—	269 954	2.4	—
Government final consumption expenditure	\$m	5 744	-2.7	—	72 844	1.5	—
Private gross fixed capital expenditure	\$m	755	2.6	—	85 505	12.1	—
Government gross fixed capital expenditure	\$m	493	-14.4	—	18 685	-5.6	—
Final demand	\$m	11 972	-0.4	—	446 989	3.6	—
Gross state product	\$m	8 813	0.6	—	450 575	3.0	—
Original series (at current prices)							
Private final consumption expenditure	\$m	5 781	4.0	—	318 480	4.0	—
Government final consumption expenditure	\$m	7 011	0.6	—	86 421	3.6	—
Private gross fixed capital expenditure	\$m	804	-1.6	—	86 304	7.9	—
Government gross fixed capital expenditure	\$m	440	-14.6	—	19 230	-5.2	—
Final demand	\$m	14 037	1.3	—	510 435	4.2	—
Gross state product	\$m	10 845	5.0	—	516 306	4.9	—

(a) Quarterly state final demand details are released as a special data service (product no. 5206.0.40.001).

Source: ABS Catalogue nos: 3101.0, 5242.0, 5609.0, 6202.0, 6203.0, 6302.0, 6321.0, 6354.0, 6401.0, 6408.0, 6416.0, 8501.0, 8634.0, 8635.8, 8731.0, 8752.0, 9214.0, 9301.0.

<i>Indicator</i>	<i>Unit</i>	<i>Latest period</i>	<i>NSW</i>	<i>Vic.</i>	<i>Qld</i>	<i>SA</i>	<i>WA</i>	<i>Tas.</i>	<i>NT</i>	<i>ACT</i>	<i>Aust.</i>
POPULATION	'000	Dec qtr 97	6 306.3	4 627.3	3 430.4	1 482.9	1 811.1	471.8	189.2	309.0	18 631.1
LABOUR FORCE											
Employed persons (trend)	'000	May 98	2 836.2	2 147.7	1 616.2	641.8	878.7	198.4	87.5	158.1	8 559.4
Unemployment rate (trend)	%	May 98	7.4	8.4	8.4	10.0	6.9	10.4	5.5	6.9	8.0
WAGE AND SALARY EARNERS											
Public sector (trend)	'000	Nov 97	473.7	318.8	284.9	118.3	146.7	41.7	22.7	70.3	1 477.0
Private sector (trend)	'000	Nov 97	1 883.1	1 432.7	895.8	386.1	534.0	115.8	49.1	66.9	5 363.4
Total public and private sector (trend)	'000	Nov 97	2 356.8	1 751.5	1 180.7	504.3	680.6	157.5	71.8	137.2	6 840.4
STATE ACCOUNTS(a)											
Gross state product at average 1989-90 prices	\$m	Yr 1996-97	152 378	118 338	74 768	31 094	50 665	8 910	4 945	8 813	450 575
Gross state product at current prices	\$m	Yr 1996-97	181 799	133 567	83 366	36 306	54 418	10 587	5 418	10 845	516 306
BUILDING APPROVALS											
Dwelling units approved	no.	Apr 98	4 943	3 313	3 200	502	1 576	133	159	93	13 919
Dwelling units approved (trend)	no.	Apr 98	4 664	3 372	3 281	636	1 677	130	180	89	14 047
Value of non-residential building approved	\$m	Apr 98	527.0	302.7	305.4	34.6	42.3	8.5	21.9	6.5	1 249.0
Value of all buildings approved	\$m	Apr 98	1 263.2	751.5	671.9	88.3	218.0	22.4	43.3	23.8	3 082.4
ENGINEERING CONSTRUCTION											
Value of engineering construction work done	\$m	Dec qtr 97	1 240.3	679.2	934.2	299.4	852.4	47.8	59.2	37.2	4 149.7
AVERAGE WEEKLY EARNINGS											
Full-time adult ordinary time (trend)	\$	Feb 97	744.9	716.7	684.3	675.4	720.4	692.2	733.6	837.7	720.8
RETAIL TRADE											
Retail turnover (trend)	\$m	Apr 98	3 981.1	2 619.3	2 134.0	861.8	1 137.4	262.5	121.7	216.1	11 334.1
HOTELS, MOTELS & GUEST HOUSE ACCOMMODATION											
Room nights occupied (trend)	'000	Dec qtr 97	3,119.7	1 550.9	2 492.5	551.1	839.2	272.1	299.2	207.5	9 332.0
Room occupancy rate (original)	%	Dec qtr 97	59.0	56.1	59.5	58.3	58.7	53.2	51.1	63.3	58.2
NEW MOTOR VEHICLE REGISTRATIONS											
Trend	no.	Apr 98	21 898	15 919	12 516	4 269	6 687	1 362	789	1 447	64 886
	<i>Unit</i>	<i>Latest period</i>	<i>Syd.</i>	<i>Melb.</i>	<i>Bris.</i>	<i>Adel.</i>	<i>Perth</i>	<i>Hob.</i>	<i>Dar.</i>	<i>Canb.</i>	<i>Aust.</i>
CONSUMER PRICE INDEX											
Food	(b)	Mar qtr 98	122.8	120.7	122.6	122.9	122.7	121.7	124.4	125.3	122.1
Housing	(b)	Mar qtr 98	100.3	84.1	100.0	89.9	88.5	95.3	111.6	93.3	93.4
Transportation	(b)	Mar qtr 98	124.2	122.1	122.8	121.2	121.2	121.7	122.0	129.0	122.9
All Groups	(b)	Mar qtr 98	120.7	119.6	121.9	121.7	118.0	121.5	121.5	120.6	120.3
Average retail prices (cents)											
Milk, carton, supermarket sales	1 litre	Mar qtr 98	116	135	117	127	135	125	123	115	n.a.
Bread, white loaf, sliced, supermarket sales	680 g	Mar qtr 98	206	191	191	165	192	185	208	200	n.a.
Beef, rump steak	1 kg	Mar qtr 98	1 186	1 008	1 079	1 197	1 067	998	1 259	1 101	n.a.
Chicken, frozen	1 kg	Mar qtr 98	364	347	328	362	351	376	440	340	n.a.
Potatoes	1 kg	Mar qtr 98	108	118	107	69	119	91	125	114	n.a.
Coffee, instant (jar)	150 g	Mar qtr 98	650	647	656	588	670	697	616	657	n.a.
Scotch nip, public bar	30 ml	Mar qtr 98	338	303	259	356	372	262	326	256	n.a.
Private motoring petrol											
Leaded	1 litre	Mar qtr 98	73.2	70.2	63.9	71.5	74.2	80	82.4	75.3	n.a.
Unleaded	1 litre	Mar qtr 98	71	68	61.7	69.2	72	78	80.4	73.1	n.a.

(a) Quarterly state final demand details are released as a special data service (product no. 5206.0.40.001).

(b) Base year: 1989-90=100.0).

4

ACT IN RELATION TO THE REST OF AUSTRALIA—PERCENTAGE CHANGES

<i>Indicator</i>	<i>Latest Period</i>	<i>NSW</i>	<i>Vic.</i>	<i>Qld</i>	<i>SA</i>	<i>WA</i>	<i>Tas.</i>	<i>NT</i>	<i>ACT</i>	<i>Aust.</i>
POPULATION	Dec qtr 97	0.2	0.2	0.4	0.1	0.3	-0.2	0.3	-0.1	0.2
LABOUR FORCE										
Employed persons (trend)	May 98	—	0.2	0.2	-0.4	0.3	0.4	0.2	0.2	0.1
Unemployment rate (trend)	May 98	—	—	-0.1	—	-0.1	-0.1	—	-0.1	—
WAGE AND SALARY EARNERS										
Pubic sector (trend)	Nov 97	0.8	-0.9	-0.2	-0.5	0.2	-0.7	-1.3	1.6	—
Private sector (trend)	Nov 97	-1.2	1.4	-1.0	1.4	1.7	-3.3	0.8	-5.1	-0.1
Total public and private sector (trend)	Nov 97	-0.8	0.9	-0.8	0.9	1.3	-2.7	0.1	-1.8	-0.1
STATE ACCOUNTS(a)										
State final demand at 1989-90 prices (trend)	Yr 1996-97	2.8	2.6	5.2	0.8	3.3	0.2	4.6	0.6	3.0
State final demand at current prices (trend)	Yr 1996-97	6.2	4.2	5.7	1.0	4.2	2.7	7.3	5.0	4.9
BUILDING APPROVALS										
Dwelling units approved (original)	Apr 98	13.6	-6.6	4.4	-32.0	-9.8	6.4	-11.2	-1.1	0.5
Dwelling units approved (trend)	Apr 98	1.5	4.2	0.7	-0.2	2.6	-0.8	-10.0	-9.2	1.7
Value of non-residential building approved	Apr 98	36.4	103.8	12.9	-35.7	-32.2	-46.5	47.0	-14.5	30.1
Value of all buildings approved	Apr 98	27.7	24.3	11.9	-31.1	-13.3	-28.0	12.5	-3.6	15.5
ENGINEERING CONSTRUCTION										
Value of engineering construction work done	Dec qtr 97	16.1	3.7	6.4	18.5	32.9	1.5	18.6	57.0	14.8
AVERAGE WEEKLY EARNINGS										
Full-time adult ordinary time (trend)	Feb 97	0.9	0.8	1.5	1.4	0.8	1.4	1.9	2.0	1.1
RETAIL TRADE										
Retail turnover (trend)	Apr 98	-0.1	0.2	0.8	0.7	0.2	-0.5	0.7	-0.1	0.2
HOTELS, MOTELS & GUEST HOUSE ACCOMMODATION										
Room nights occupied (trend)	Dec qtr 97	0.8	—	0.9	2.2	0.3	3.6	0.6	2.1	0.8
Room occupancy rate (original)	Dec qtr 97	1.5	2.9	-5.0	6.1	0.8	13.7	-15.6	7.0	0.2
NEW MOTOR VEHICLE REGISTRATIONS										
Trend	Apr 98	0.4	0.2	1.0	0.4	0.3	2.2	1.2	-0.6	0.5

	<i>Latest period</i>	<i>Syd.</i>	<i>Melb.</i>	<i>Bris.</i>	<i>Adel.</i>	<i>Perth</i>	<i>Hob.</i>	<i>Dar.</i>	<i>Canb.</i>	<i>Aust.</i>
CONSUMER PRICE INDEX										
Food	Mar qtr 98	1.0	0.8	1.2	0.7	0.6	—	1.7	0.3	0.8
Housing	Mar qtr 98	0.2	-3.2	-0.2	-0.3	-0.3	-0.2	0.3	-0.4	-0.8
Transportation	Mar qtr 98	-0.4	-1.8	-1.0	-0.9	-0.2	-0.3	-0.3	0.0	-0.9
All Groups	Mar qtr 98	0.5	-0.2	0.4	0.4	0.3	0.2	0.6	0.7	0.3
Average retail prices (cents)										
Milk, carton, supermarket sales	Mar qtr 98	—	1.5	-0.8	2.4	—	—	0.8	0.0	n.a.
Bread, white loaf, sliced, supermarket sales	Mar qtr 98	3.0	1.6	-2.1	1.2	2.7	-2.1	6.1	1.0	n.a.
Beef, rump steak	Mar qtr 98	-3.3	-4.0	-0.6	9.0	1.4	2.3	4.0	-2.0	n.a.
Chicken, frozen	Mar qtr 98	0.3	-2.8	-8.6	3.1	-4.6	-4.6	14.0	-2.3	n.a.
Potatoes	Mar qtr 98	-11.5	-16.9	-6.1	-33.7	-0.8	9.6	-11.3	-8.8	n.a.
Coffee, instant (jar)	Mar qtr 98	2.4	2.2	—	-0.7	2.1	—	-3.8	2.3	n.a.
Scotch nip, public bar	Mar qtr 98	1.2	1.3	1.2	0.6	1.6	1.2	0.3	-11.4	n.a.
Private motoring petrol										
Leaded	Mar qtr 98	-2.9	-6.3	-6.2	-4.7	-2.1	-1.6	-0.2	-0.4	n.a.
Unleaded	Mar qtr 98	-3.0	-6.6	-6.4	-4.7	-2.3	-1.6	-0.2	-0.4	n.a.

(a) Quarterly state final demand details are released as a special data service (product no. 5206.0.40.001).

SELF-HELP ACCESS TO STATISTICS

PHONE Call 1900 986 400 for the latest statistics on CPI, Labour Force, Earnings, National Accounts, Balance of Payments and other topics. (Call cost is 75c per minute)

INTERNET <http://www.abs.gov.au>

LIBRARY A range of ABS publications is available from public and tertiary libraries Australia wide. Contact your nearest library to determine whether it has the ABS statistics you require.

WHY NOT SUBSCRIBE?

PHONE +61 1300 366 323

FAX +61 3 9615 7848

CONTACTING THE ABS

ABS provides a range of services, including: a telephone inquiry service; information consultancy tailored to your needs; survey, sample and questionnaire design; survey evaluation and methodological reviews; and statistical training.

<i>INQUIRIES</i>	<i>By phone</i>	<i>By fax</i>
Canberra	02 6252 6627	02 6253 1404
Sydney	02 9268 4611	02 9268 4668
Melbourne	03 9615 7755	03 9615 7798
Brisbane	07 3222 6351	07 3222 8283
Perth	08 9360 5140	08 9360 5955
Adelaide	08 8237 7400	08 8237 7566
Hobart	03 6222 5800	03 6222 5995
Darwin	08 8943 2111	08 8981 1218

POST Client Services, ABS, PO Box 10, Belconnen, ACT 2616

EMAIL client.services@abs.gov.au



2130380006984
ISSN 1320-808X

RRP \$15.50